



Hydraulically Pressed **CONCRETE PAVERS** With Density and Strength of Stone for PLAZAS • DECKS • PATIOS • ROOFS



PRODUCT IDENTIFICATION

- 1. #403 - 12" x 24" x 2"
- 2. #672 - 12" x 24" x 2"

- 3. #902 - 12" x 24" x 2"
- 4. #283 - 18" x 18" x 2"
- 5. #1076 - 24" x 24" x 2"

- 6. Natural Brick - 12" x 24" x 2"
- 7. #403L - 24" x 24" x 2"
- 8. #672 - 15" x 30" x 2"

- 9. #1002 - 24" x 24" x 2"
- 10. #473S - 24" x 24" x 2"
- 11. #672D - 24" x 24" x 3"

- 12. #110 Brick - 24" x 24" x 2"
- 13. #104 - 12" x 24"
- 14. #403 Brick - 18" x 18"



Hydraulically Pressed CONCRETE PAVERS



University of Omaha, Omaha, Nebraska—Installed by P. George



Sohio Corporate Headquarters, Cleveland, Ohio

SUNNY BROOK PAVERS

Sunny Brook Pressed Concrete Pavers are manufactured on a hydraulic European press that utilizes 460 tons of pressure to eliminate water and air from the wet concrete mix to provide a superior paver. They are precision molded to provide uniform size and texture.

Sunny Brook pavers have a minimum compressive strength of 8,000 psi (55,152 kPa) and can be increased upon request. Our pavers have a water absorption rate less than 5% and a density of 166.1 pcf (2660.58 kg/m³). The compressive strength, density and lower water absorption rate insure a premium paver and installation.

Sunny Brook pavers are typically furnished unreinforced. They can be supplied with welded wire reinforcing upon architects or engineers specification.

PAVER PIERS

Sunny Brook Pressed Concrete Company manufactures and distributes Sunny Brook Paver Piers.

Paver Piers are used on terraces, plazas, and waterproofed membrane roofs. The Paver Piers roofing system features excellent drainage, provides air circulation, reduces heat and sun exposure for the protection of the membrane. Paver Piers also provide uniform and even spacing for Sunny Brook Pressed Pavers.

Paver Piers can level any problem areas by multiple stacking and implementation of 1/16", 1/8" shims to level all surfaces. Paver Piers can be easily disassembled into four sections for use on corners and borders.

Paver Piers can accommodate custom designs to fit special paving patterns.

Please feel free to consult with our representatives.

SIZES

Sunny Brook Pressed Pavers are available in the sizes as shown in the chart. Paver thickness ranges from 1-1/4" (32 mm) to 4" (102 mm) upon specification. Standard thickness is 2" (51 mm).



Installation Using Paver Piers

Pavers Piers are placed under the corners and at the midpoints for increased stability and support in heavy traffic areas such as window washing equipment, vehicular traffic, etc.

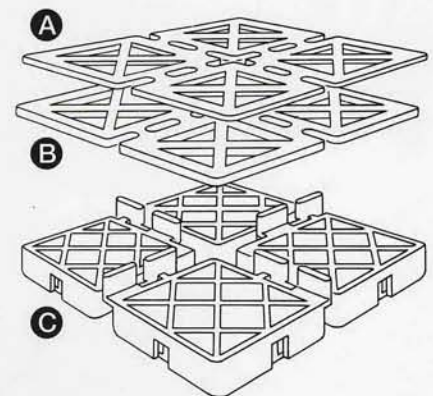
PAVER SIZE CHART

Sizes shown are nominal dimensions.

- 12" x 12" (305 x 305 mm) *Special Order*
- 12" x 24" (305 x 610 mm)
- 15" x 15" (381 x 381 mm)
- 15" x 30" (381 x 762 mm)

- 18" x 18" (457 x 457 mm)
- 18" x 24" (457 x 610 mm)
- 24" x 24" (610 x 610 mm)
- 24" x 36" (305 x 914 mm)
- 30" x 30" (762 x 762 mm)
- 36" x 36" (914 x 914 mm) *Special Order*

ADA compliant Tactile Warning Pavers are available in all sizes—contact Sunny Brook. Additional paver sizes are available. Pressed Concrete Drain Grates are available in all sizes.



Pedestals are 5-1/2" x 5-1/2" (140 x 140 mm) and available in three thicknesses.

- A** 1/16" (1.6 mm)
- B** 1/8" (3.2 mm)
- C** 5/8" (15.9 mm)

Low Temperature Brittleness.

ASTM D746: -95° F (-71° C)

Shore Hardness:

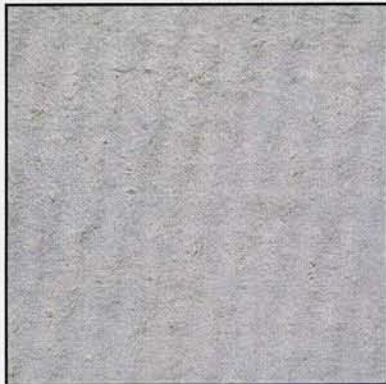
ASTM D2240: D62

PAVERS for PLAZAS • DECKS • PATIOS • ROOFS

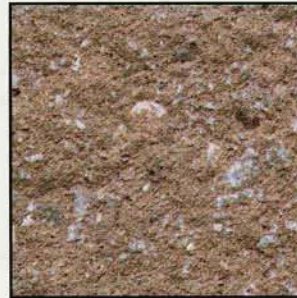
Textures



Quarry
3020-C



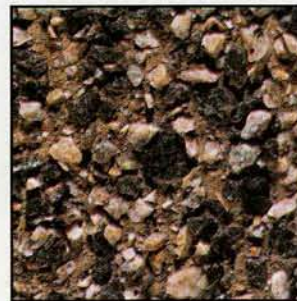
Diamond
2040-A



3030-C



4002-D



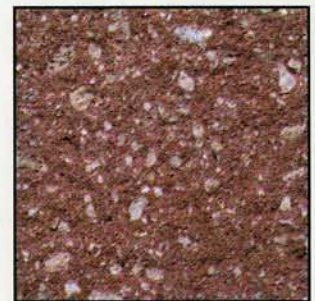
4085-E



4084-D



3037-C



3025-C

COLORS

Sunny Brook Pressed Pavers are available in an unlimited variety of colors. We will blend specific colors upon request. Because our pavers are made using natural materials, colors may vary slightly. Contact our sales office for actual color samples.

FINISHES

An unlimited number of finishes are available for Sunny Brook Pressed Pavers, including brick faced, diamond, quarry (Architectural), and unlimited texture with your choice of aggregate for an exposed aggregate finish.

Paver Installation

1. Sand-set method:

Sand shall be screeded to proper pitch and height so that final installation will result in proper surface drainage and butt flush to adjacent surfaces. Lay pavers on sand bed, taking care not to disturb screeded sand bed. Set with hand tight joints unless specified. Otherwise maintain proper joint alignment, keeping lines straight and true. Cut paving units with masonry saw to fit adjacent structures. After installation of concrete paving units, vibrate lightly with rubber roller type vibrator to bring units to even plane. Sweep clean mason sand into joints, to a point slightly below the top surface of paving units.

A. Light duty walkways and domestic use—paving units may be set in 1"-2" sand bed over existing subsoil provided that soil is stable and well-drained.

B. Vehicular traffic and heavy duty industrial areas—a sub base of 4"-10" of compacted gravel shall be installed and compacted by general contractor before installation of sand bed. Sand bed shall be a uniform thickness of 1"-2".

2. Pedestal method

A. Installation by pedestal method shall be used for foot traffic areas only.

B. Surfaces under pedestal and paving units shall be clean and free from debris.

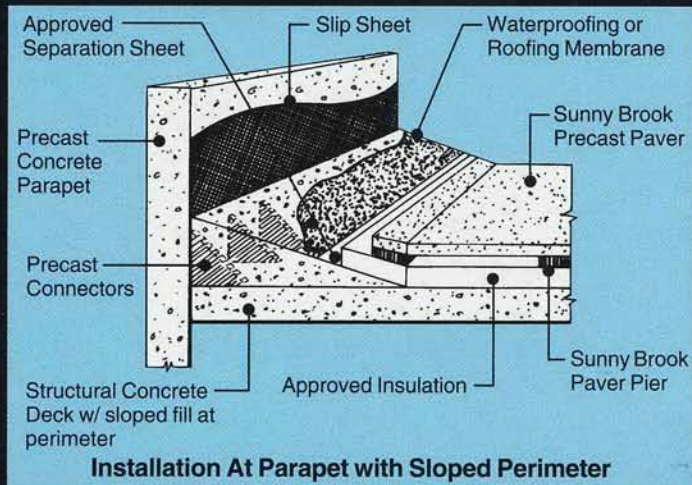
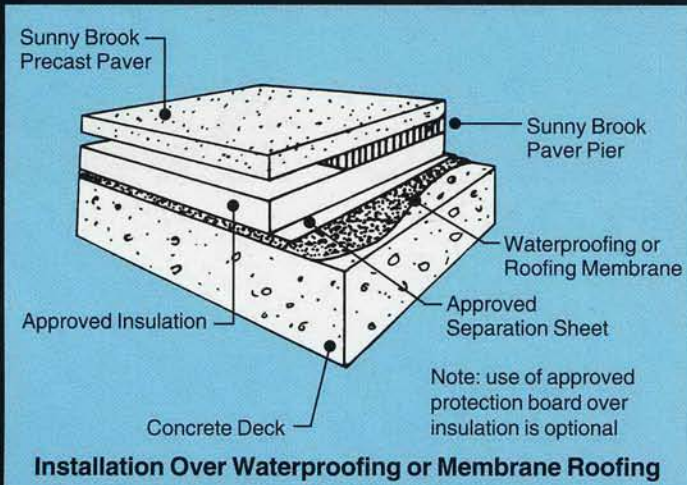
C. All waterproofing, protection and other related work that will be beneath paving units shall have already been installed prior to the beginning of the paving installation.

D. Paving units shall be installed in accordance with the design layout.

E. Pavers shall be installed in an even plane with no noticeable unevenness.

Cleaning—at completion of work, remove rubbish, debris, dirt, equipment and excess material from the site. Clean adjoining surfaces which were soiled by and during the course of work.

For references on installation call our representatives.



COMPRESSIVE STRENGTH AND ABSORPTION RESULTS

Sample No.	Area (In ²)	Failure Load (lbs.)	Compressive Strength (psi)	Percent Absorption
GBG-1	8.066	87,500	10,850	3.9
GBG-2	7.666	82,500	10,760	3.9
GBG-3	7.827	80,000	10,220	4.0
Average			10,610	3.9

Nominal 2" x 4" size samples were prepared for compressive strength testing.



3586 Sunny Brook Road
 Kent (Brimfield), Ohio 44240
 Tel: 330-673-7667
 Fax: 330-677-3103
 E-mail: sbconcrete@aol.com
 Contact Sunny Brook Pressed Concrete
 for Samples and Technical Assistance



Printed in U.S.A.